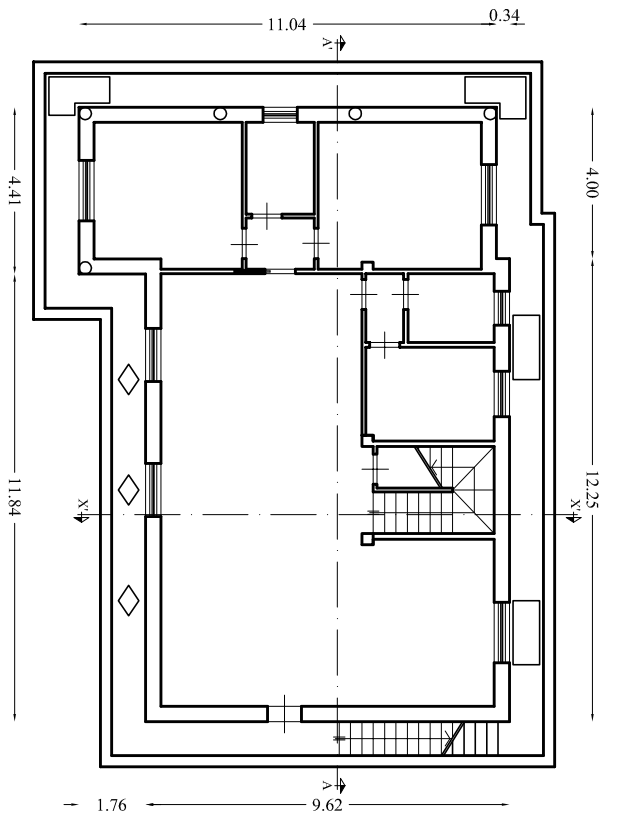
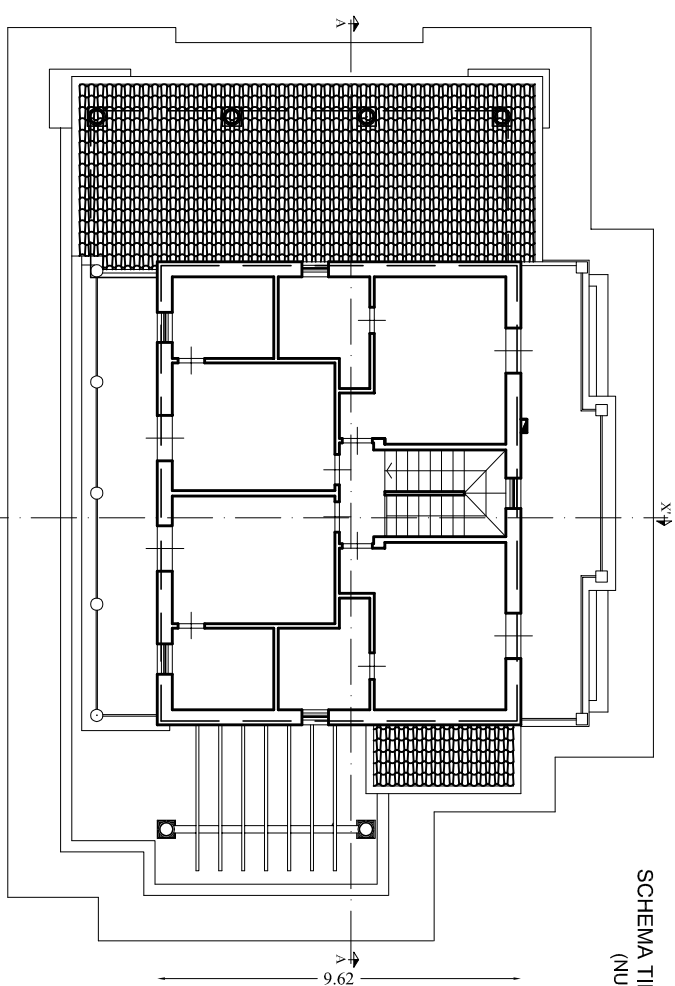


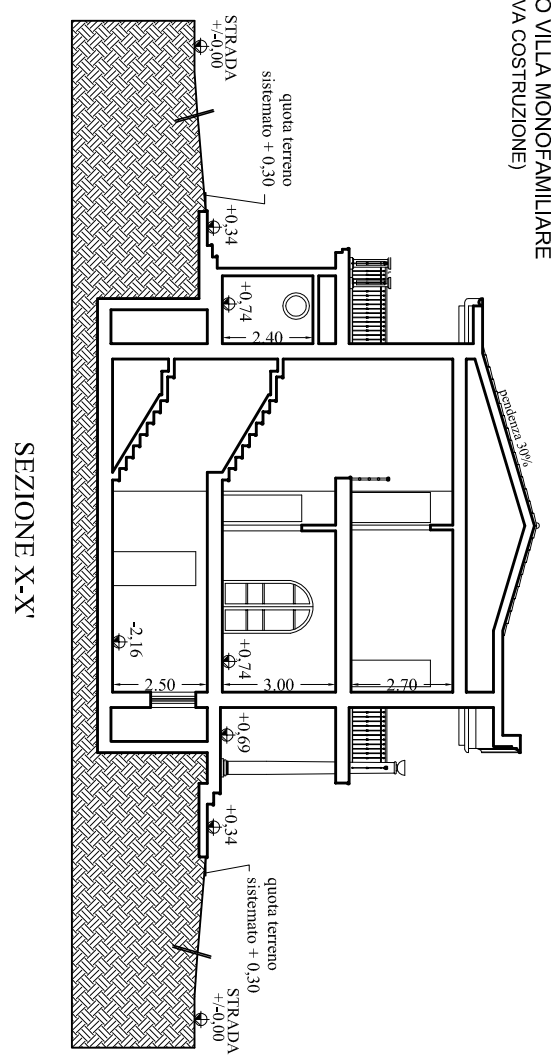
SCHEMA TIPO VILLA MONDEFAMILIARE
(NUOVA COSTRUZIONE)



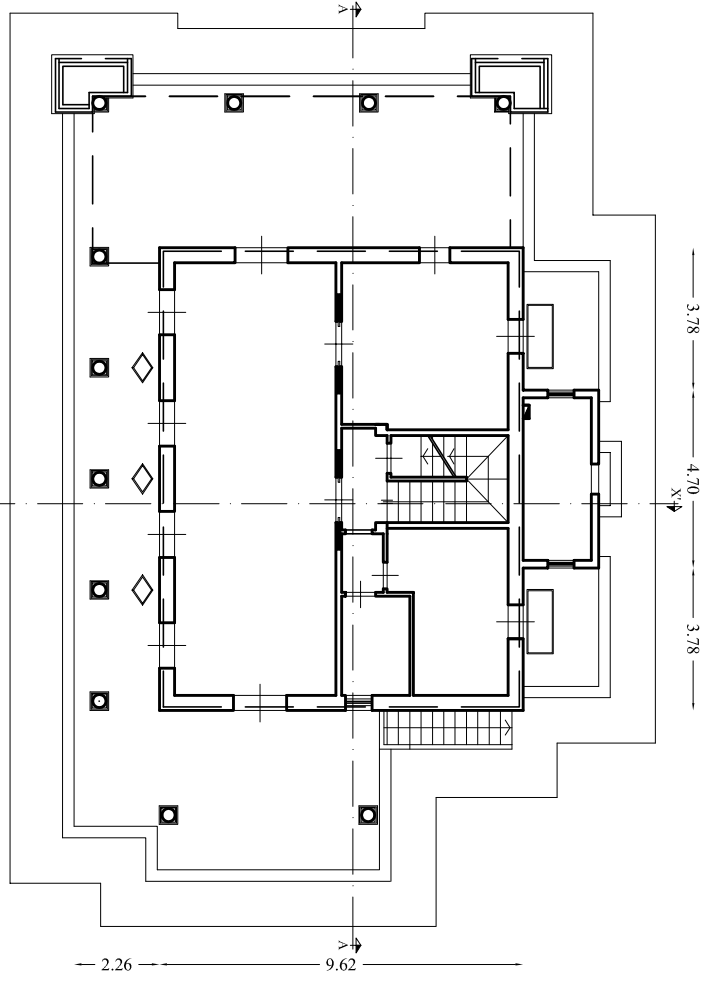
PIANTA TIPO PIANO SEMINTERRATO



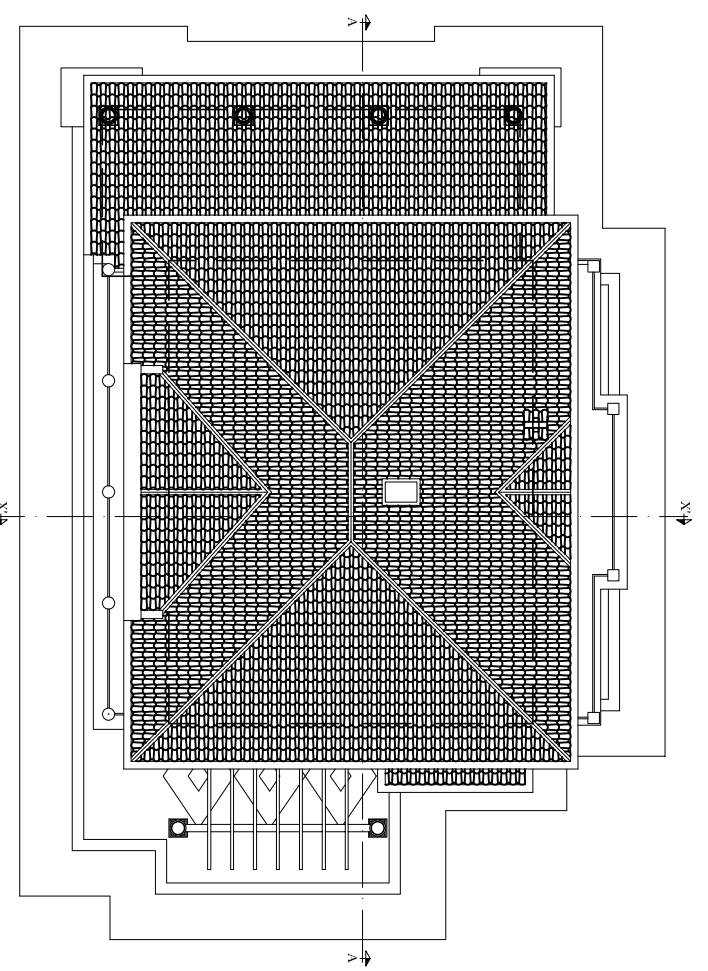
PIANTA TIPO PIANO PRIMO



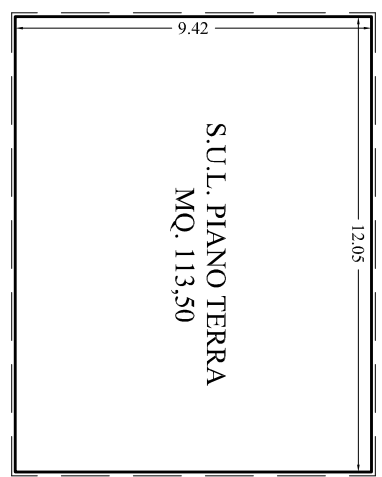
SEZIONE X-X'



PIANTA TIPO PIANO TERRA

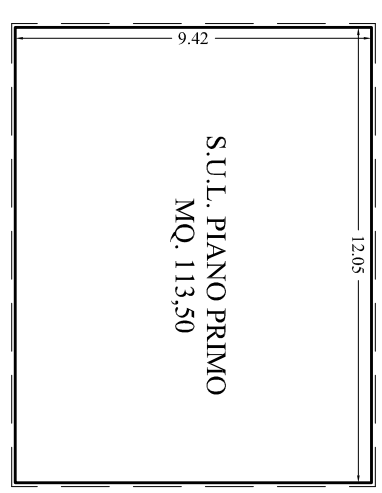


PIANTA TIPO COPERTURA



PIANTA PIANO TERRA

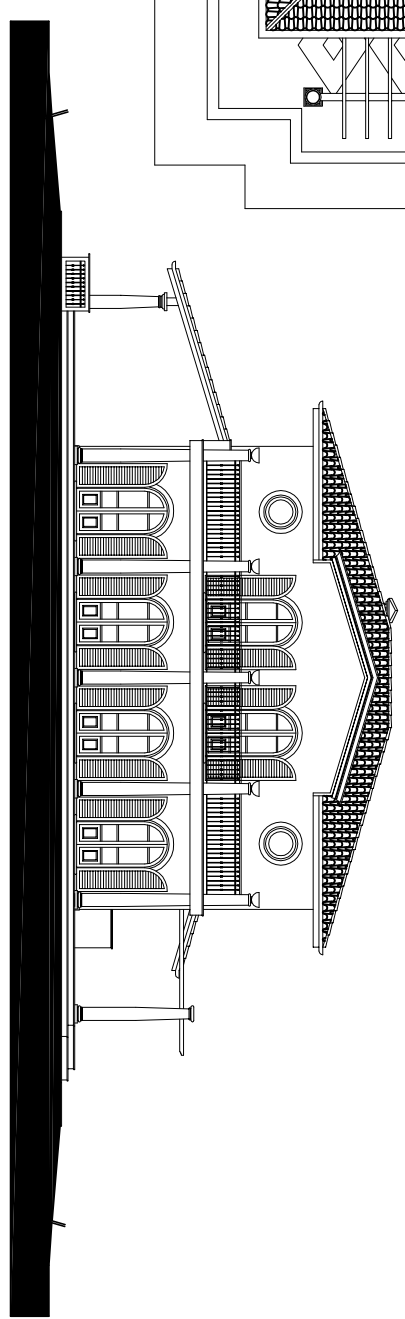
S.U.L. PIANO TERRA
MQ. 113,50



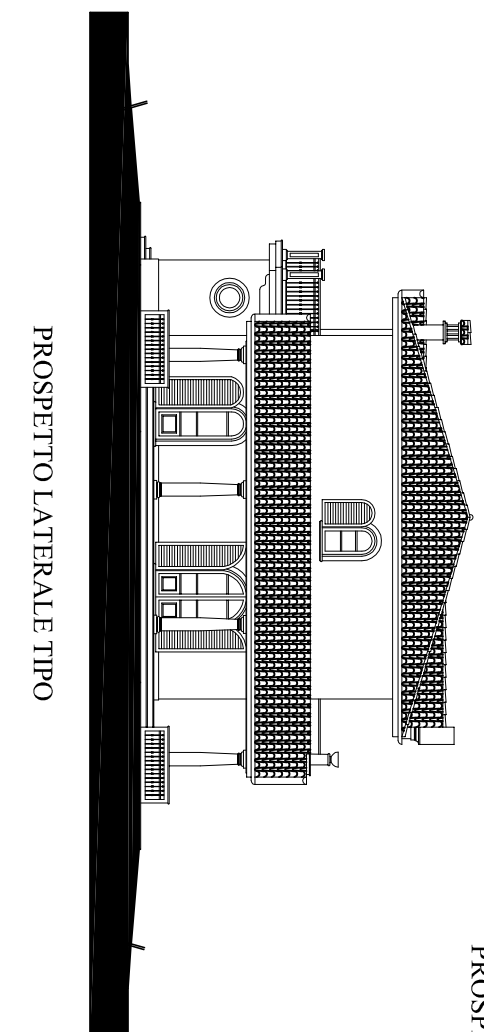
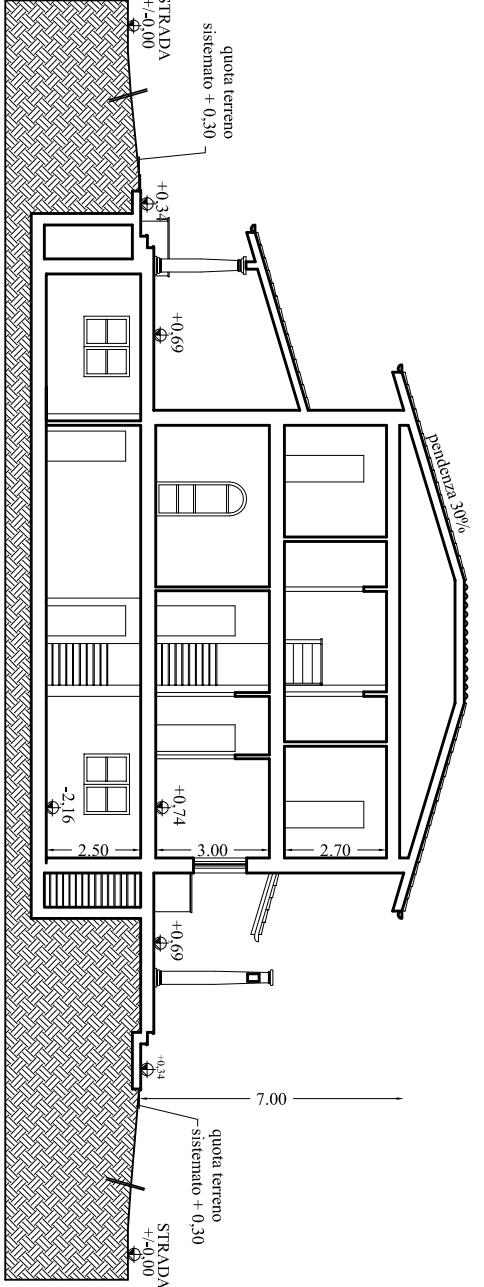
PIANTA PIANO PRIMO

S.U.L. PIANO PRIMO
MQ. 113,50

TOTALE S.U.L.
MQ. 227,00



PROSPETTO PRINCIPALE TIPO



PROSPETTO LATERALE TIPO

COMUNE DI FORTE DEI MARMI PROVINCIA DI LUCCA		TITOLO DELLA TAVOLA: ABITAZIONE DI TIPO ORDINARIO	
PIANO COMPLESSO DI INTERVENTO PIANO ATTUATIVO DEL COMPARTO AT3-A		TAV 12	
PROGETTAZIONE: Coordinatore: Arch. Ghiselli Enrico		SCHEMA EDIFICIO TIPOLOGIA A VILLA LOTTO 3	
Q.P.		scala	1:200