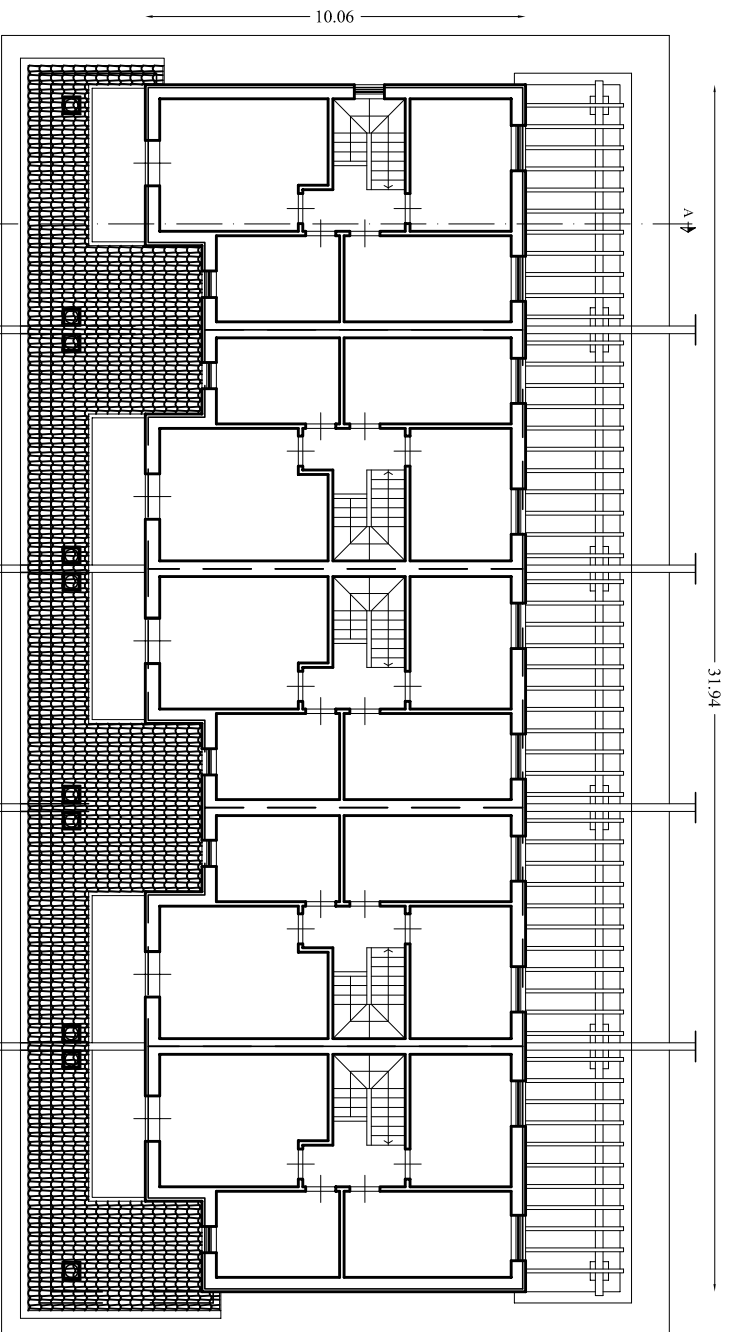
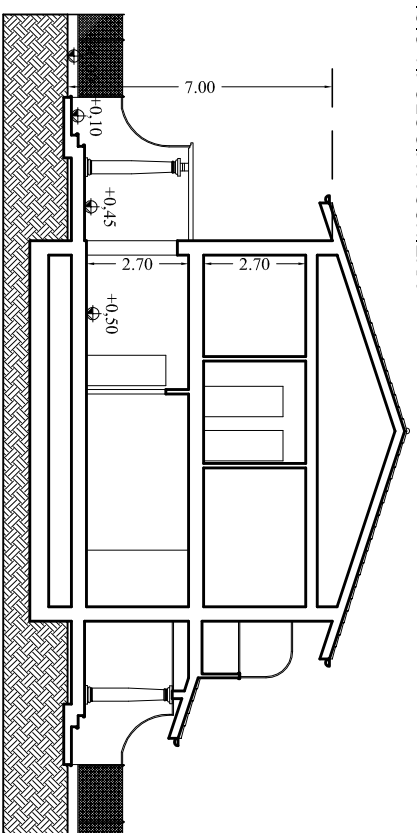


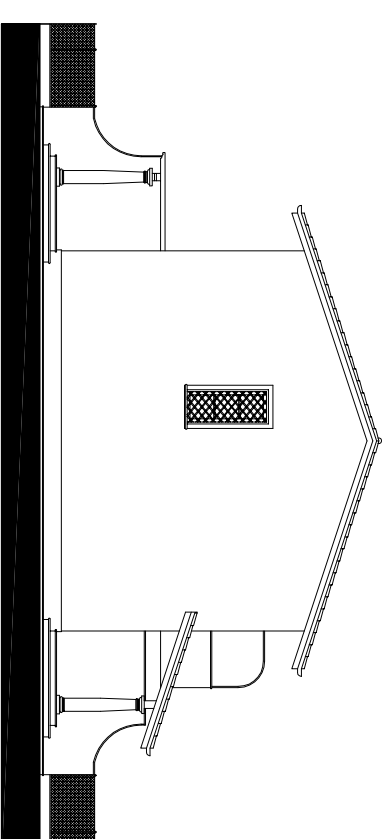
PIANTA TIPO PIANO TERRA



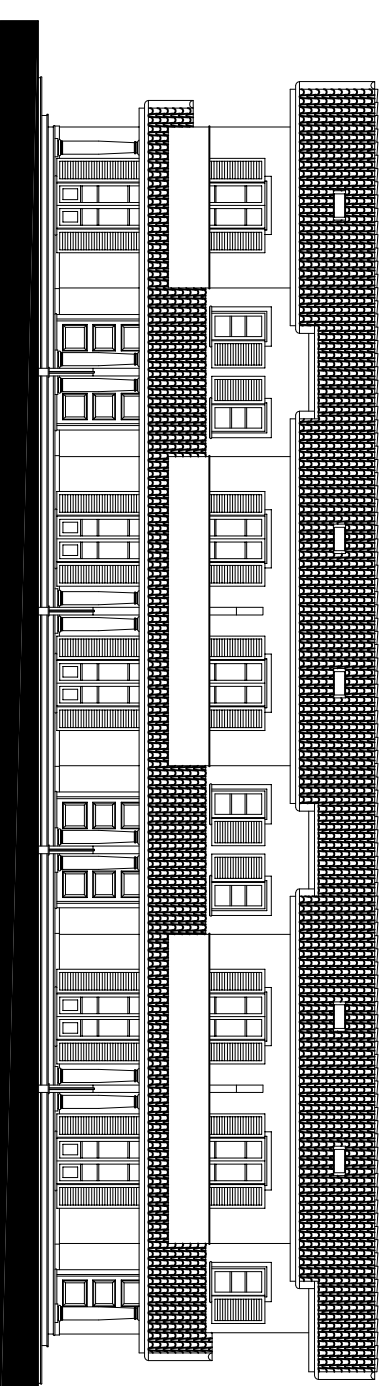
PIANTA TIPO PIANO PRIMO



SEZIONE A-A'

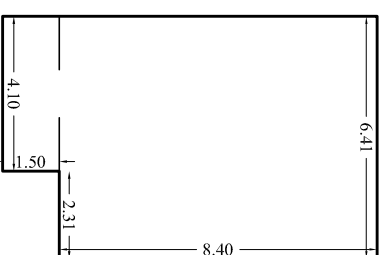


PROSPETTO LATERALE TIPO



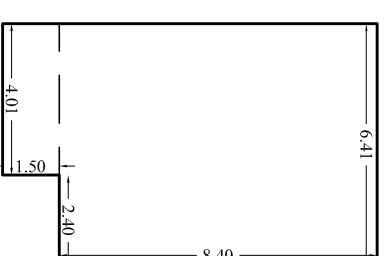
PROSPETTO PRINCIPALE TIPO

ALLOGGIO LATERALE
TOTALE S.U.L. MQ. 119,98

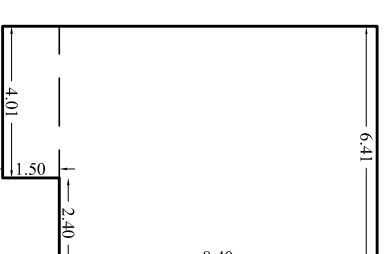


PIANTA PIANO TERRA

ALLOGGIO LATERALE
TOTALE S.U.L. MQ. 119,70

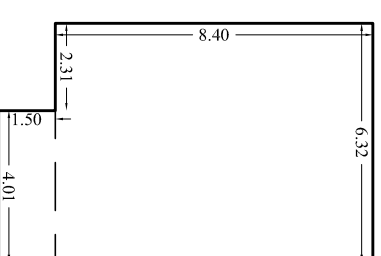


PIANTA PIANO TERRA

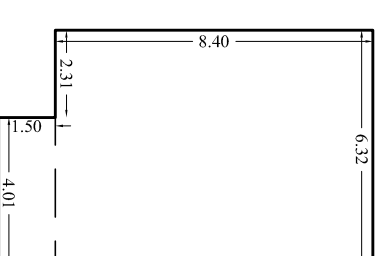


PIANTA PIANO PRIMO

ALLOGGI CENTRALI
TOTALE S.U.L. MQ. 118,18



PIANTA PIANO TERRA



PIANTA PIANO PRIMO

PROGETTAZIONE:
Coordinatore: Arch. Ghiselli Enrico

COMUNE DI FORTE DEI MARMI
PROVINCIA DI LUCCA
PIANO COMPLESSO DI INTERVENTO
PIANO ATTUATIVO DEL COMPARTO AT3-A

Q.P.	TITOLO DELLA TAVOLA:	scala
TAV	ABITAZIONE ART. 7 NTA - EDILIZIA CONVENZIONATA - SCHEMA EDIFICI TIPOLOGIA VILLETTE A SCHIERA LOTTO 2	1:200
13		

