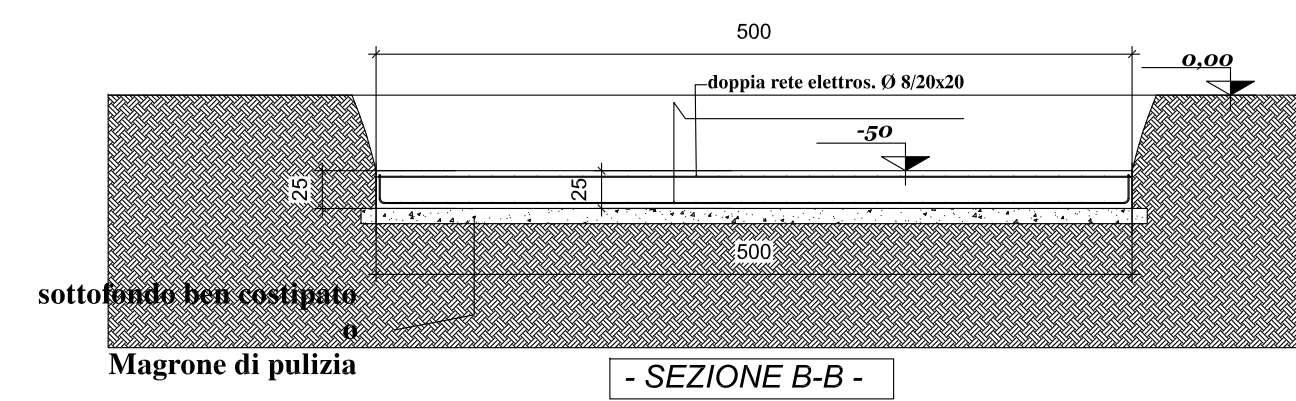
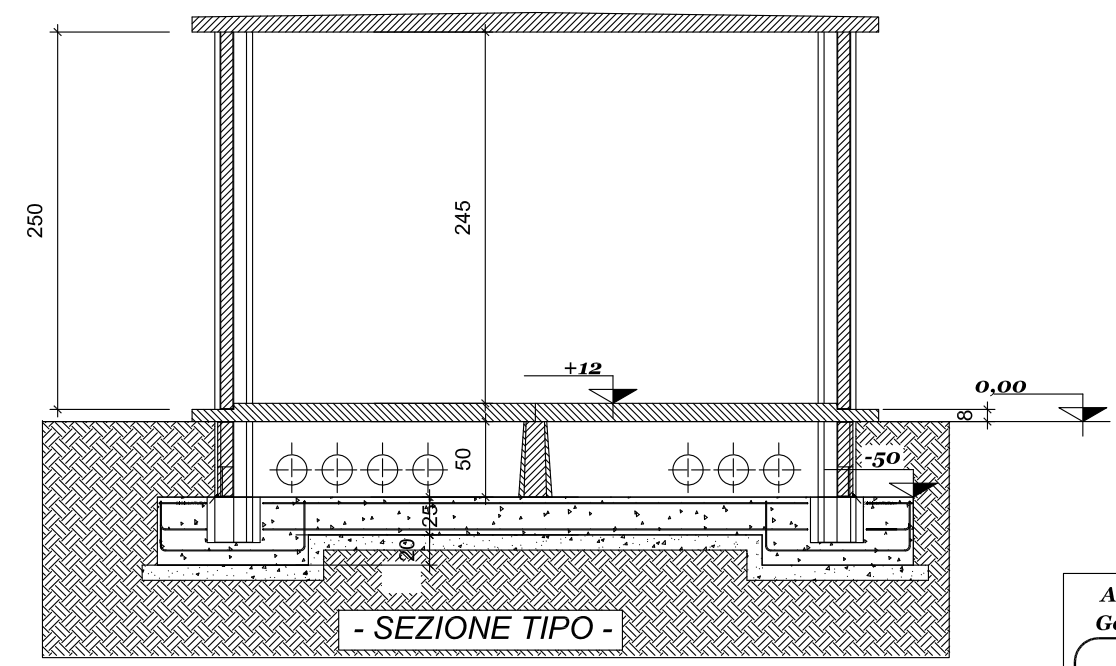
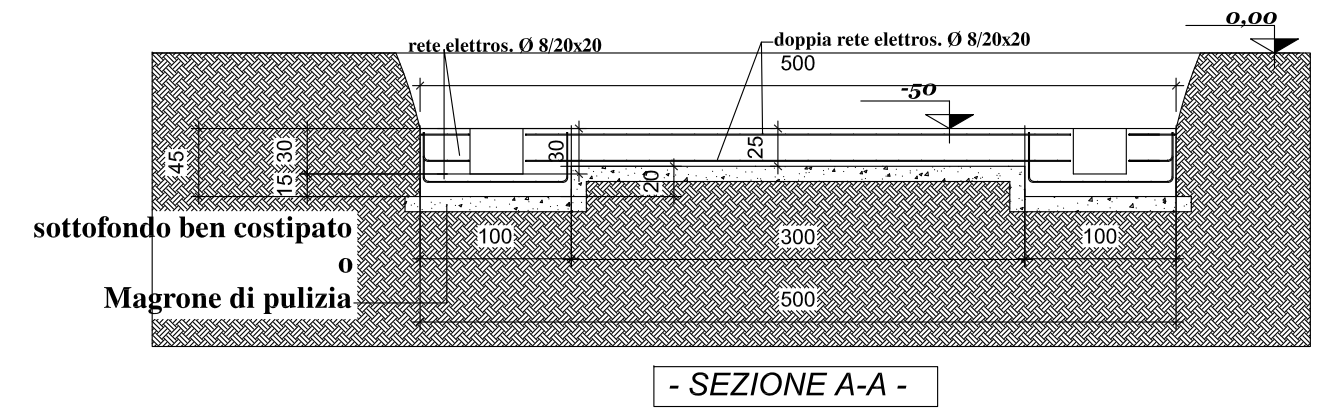
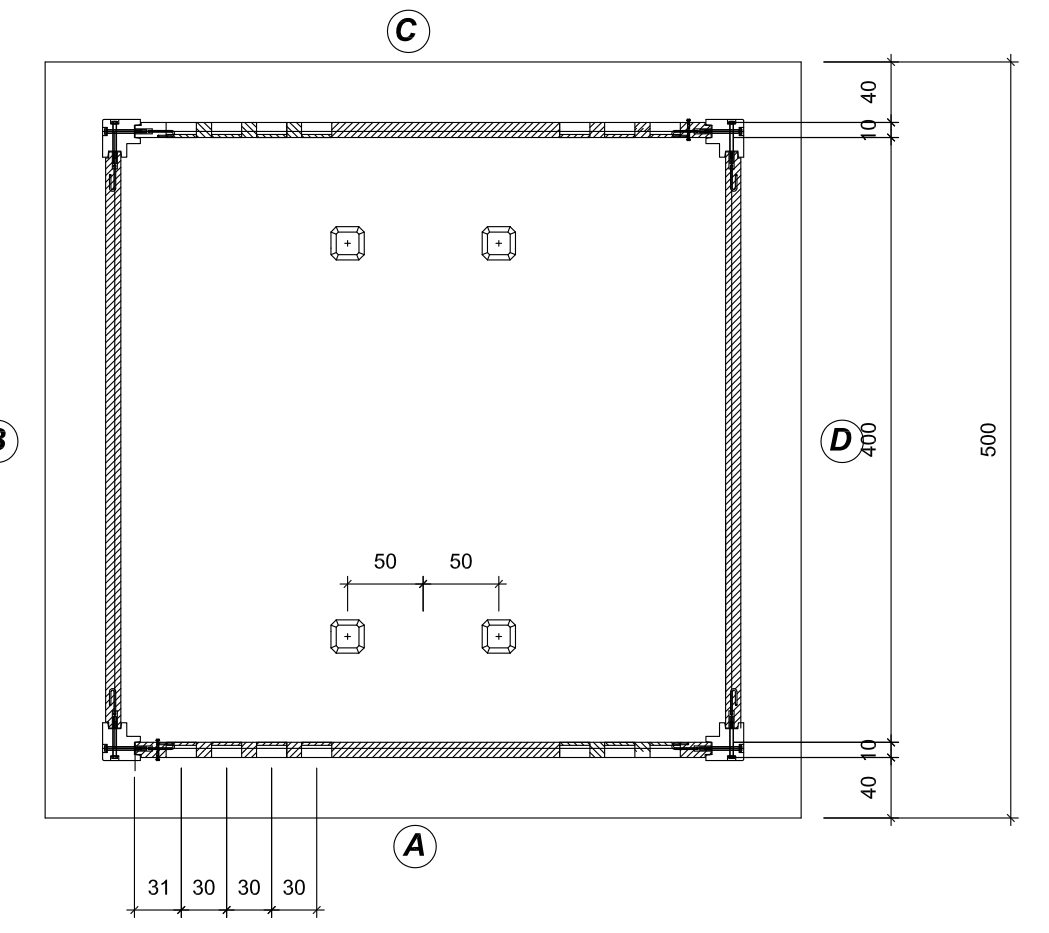
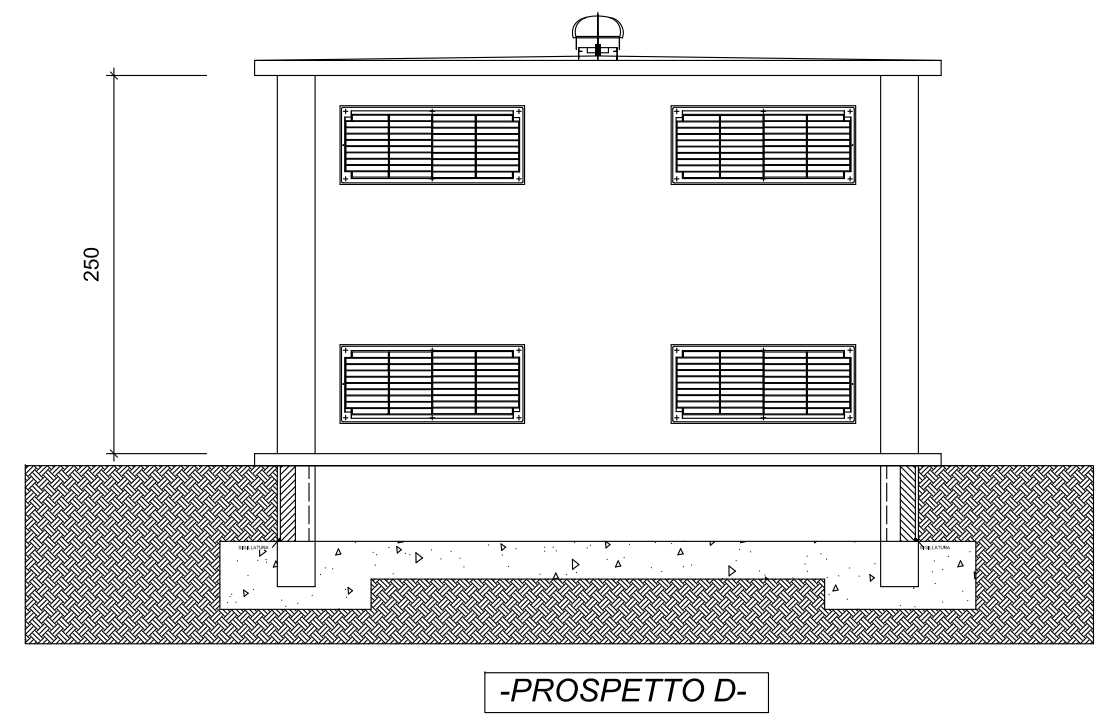
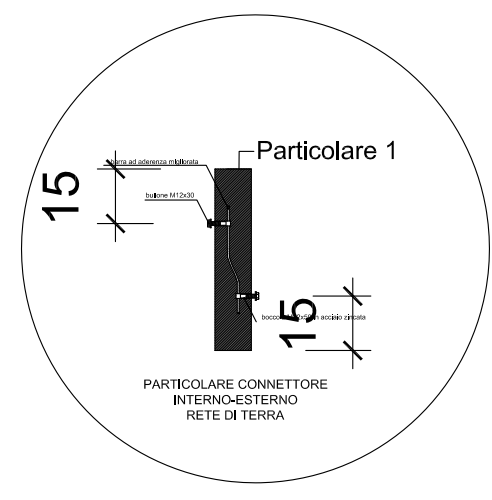
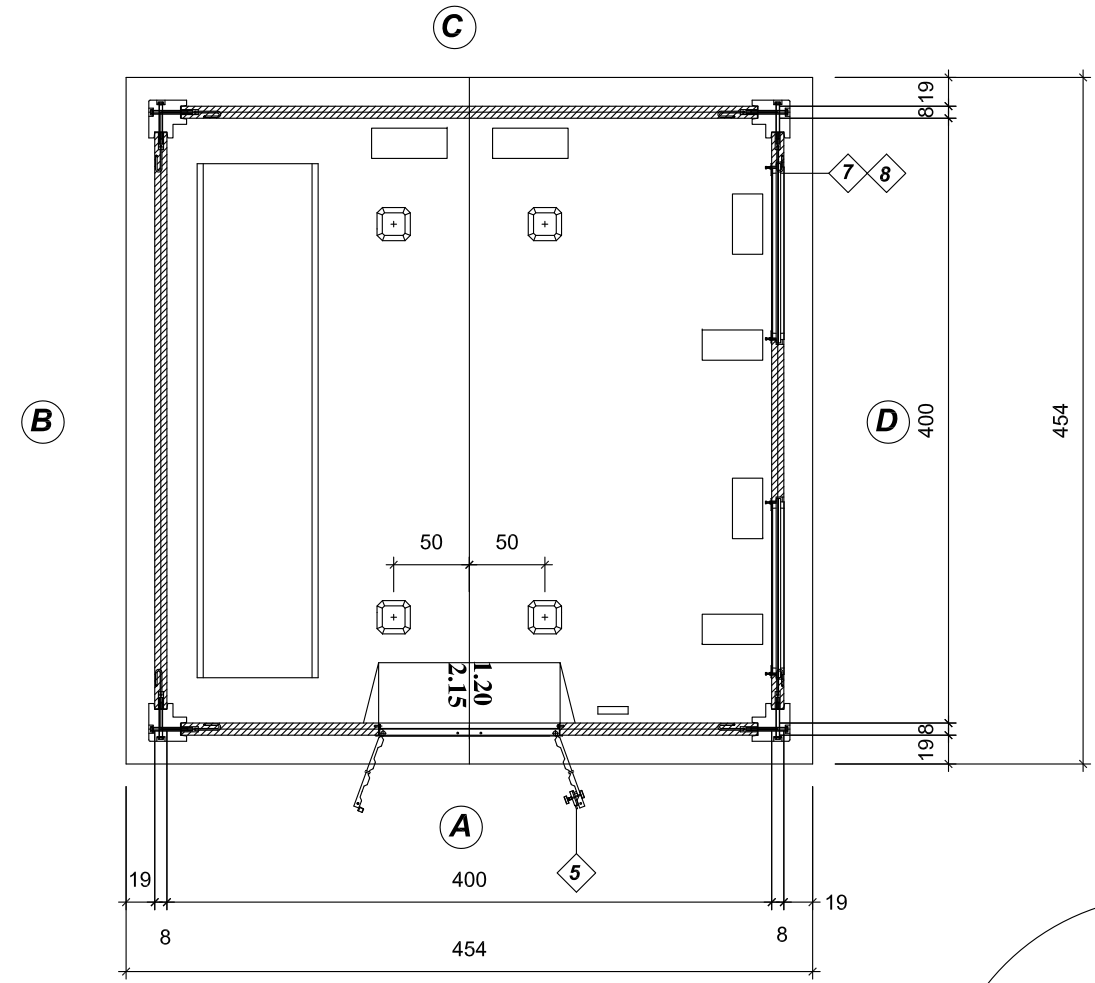
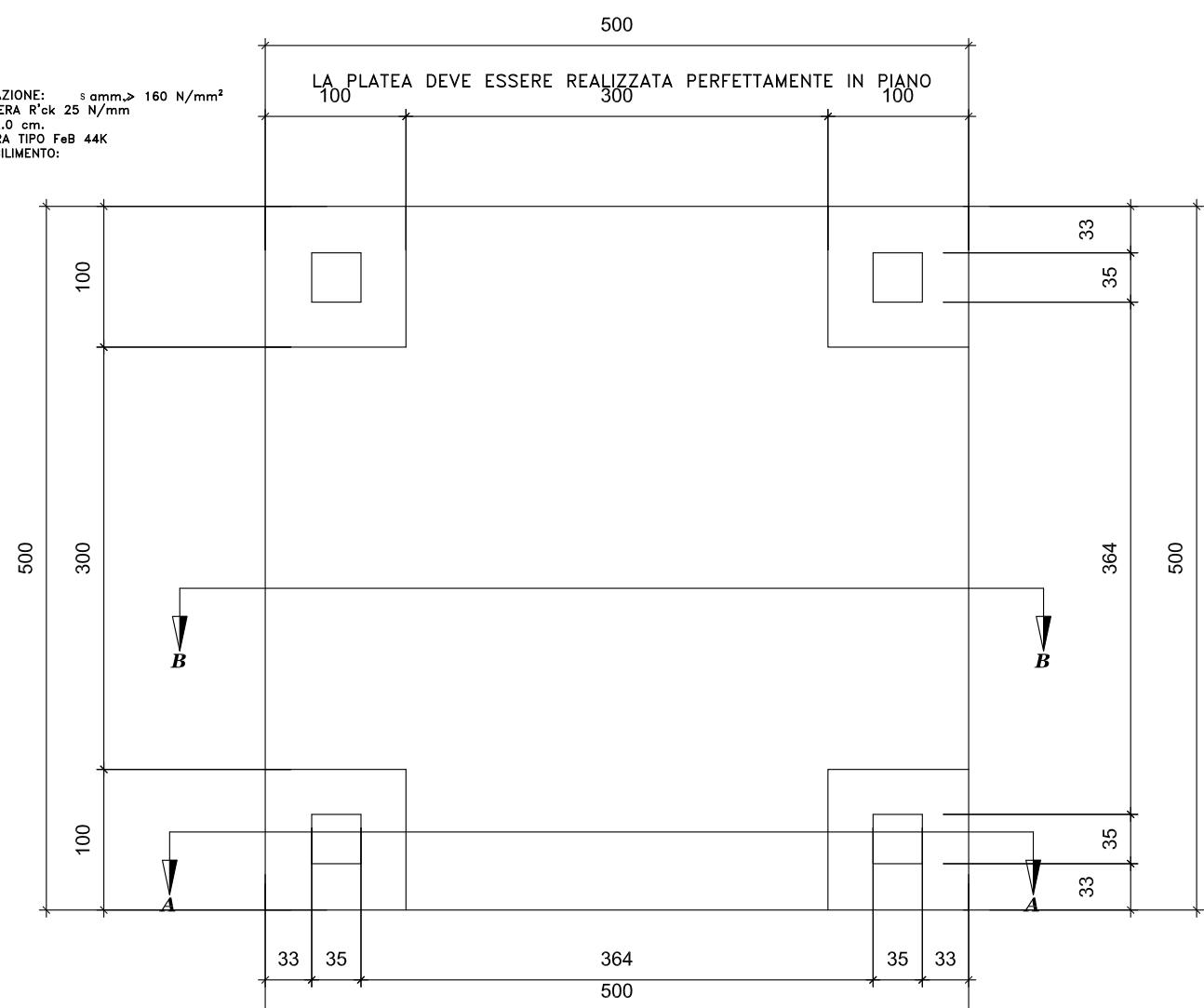


B) STRUTTURE IN FONDAZIONE: $\sigma_{amm} \geq 160 \text{ N/mm}^2$
 - CALCESTRUZZO IN OPERA R'ck 25 N/mm²
 - COPRIFERRO MINIMO 2.0 cm.
 - ACCIAIO PER ARMATURA TIPO FeB 44K
 CONTROLLATO IN STABILIMENTO:

LA PLATEA DEVE ESSERE REALIZZATA PERFETTAMENTE IN PIANO



Angeloni Alfredo & F.lli S.n.c - zona ind. - 67062 Magliano dei marsi (AQ) - tel 0863/51352 fax 0863/517993- alfucab@tiscali.it
 Geom. Antonio Angeloni & c. S.n.c - Via G. Villani, n° 60- 50033 FIRENZUOLA (FI) - tel/Fax 055/819061 - angeloni-fi@libero.it

Disegnatore	Elaborato	PIANTA - PROSPETTI - SEZIONI CABINE OMOLOGATE E.N.E.L. impianti elettrici PREFABBRICATI IN C.A.V.	CABINA ELETTRICA PREFABBRICATA Ditta :- CANTIERE:- Dim. int.-> 4,00 x 4,00 h=2,50 con cavedio per n° 2 trasformatori
Data	05/05/09		
Scala	1:1		

LEGENDA:
 ○ MODULO APT. FINE
 ○ MODULO APT. BREV.
 ○ TRASFORMATORE
 ○ PORTA CONDENSATA
 ○ PORTA DUE ANTE
 ○ PORTA UNO ANTE
 ○ SERRANDA IN ALTO
 ○ SERRANDA IN BASSO
 ○ PAVIMENTO IN C.A.V.