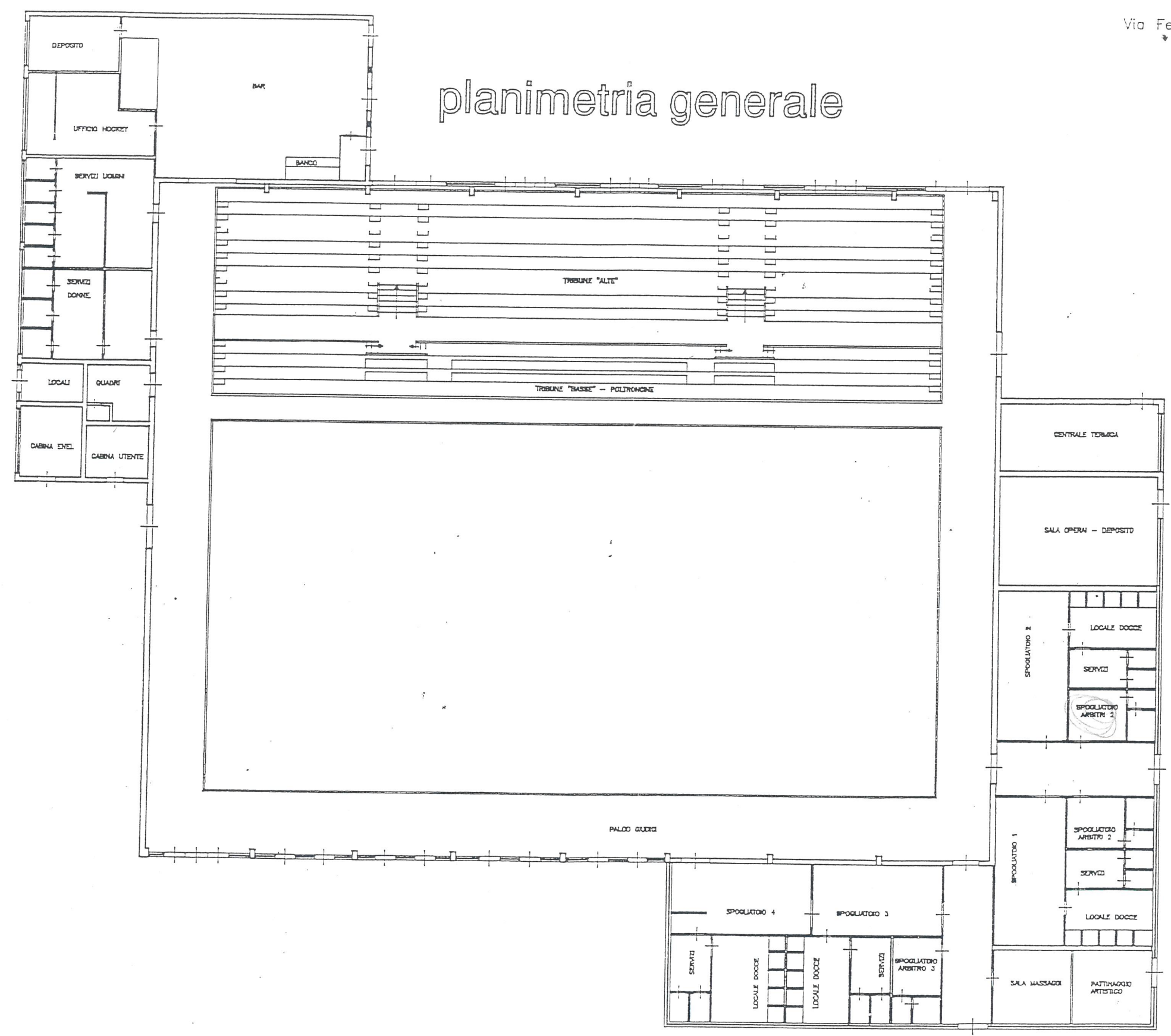


# planimetria generale

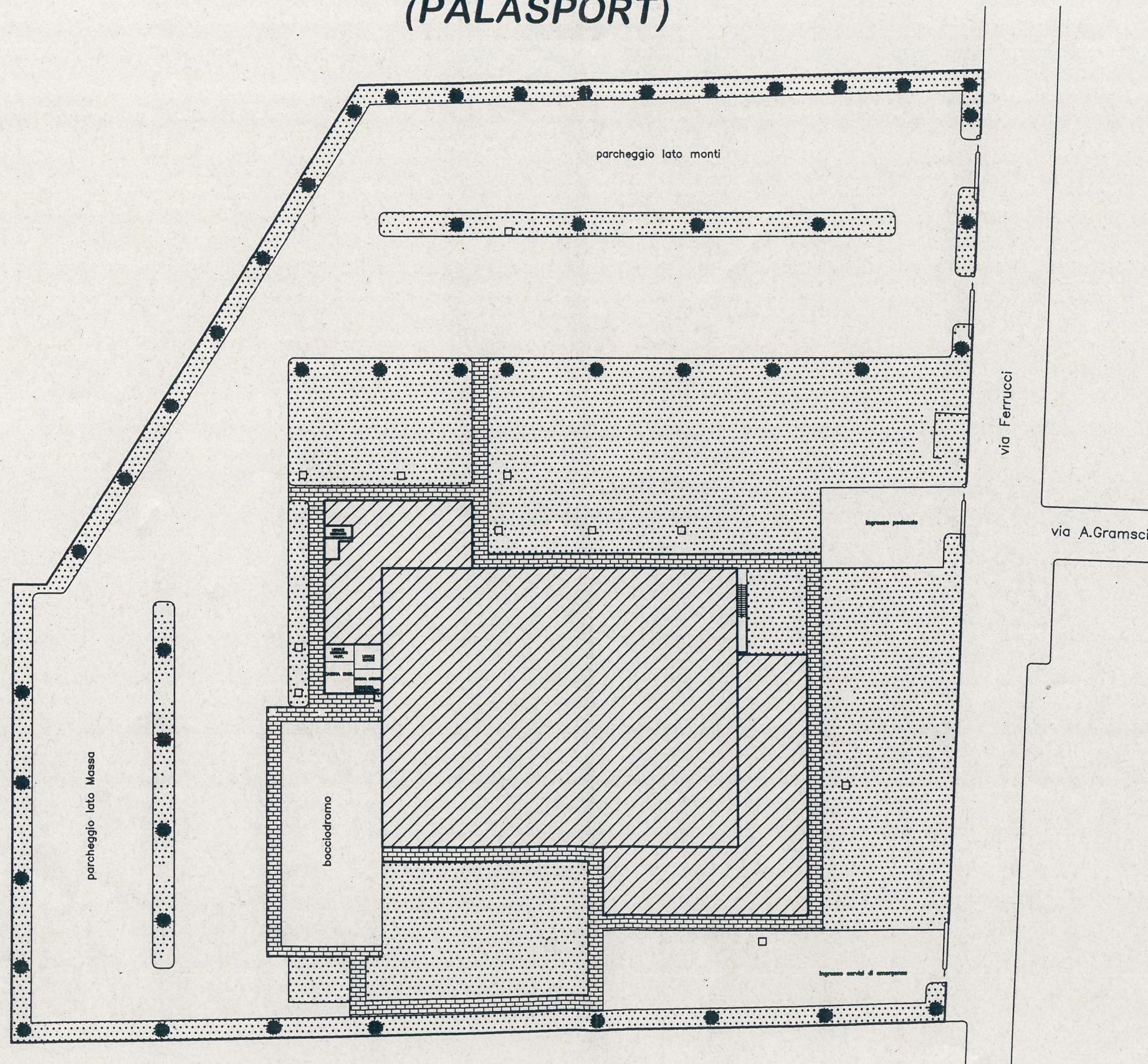




# SCHEMA PLANIMETRICO

(PALASPORT)

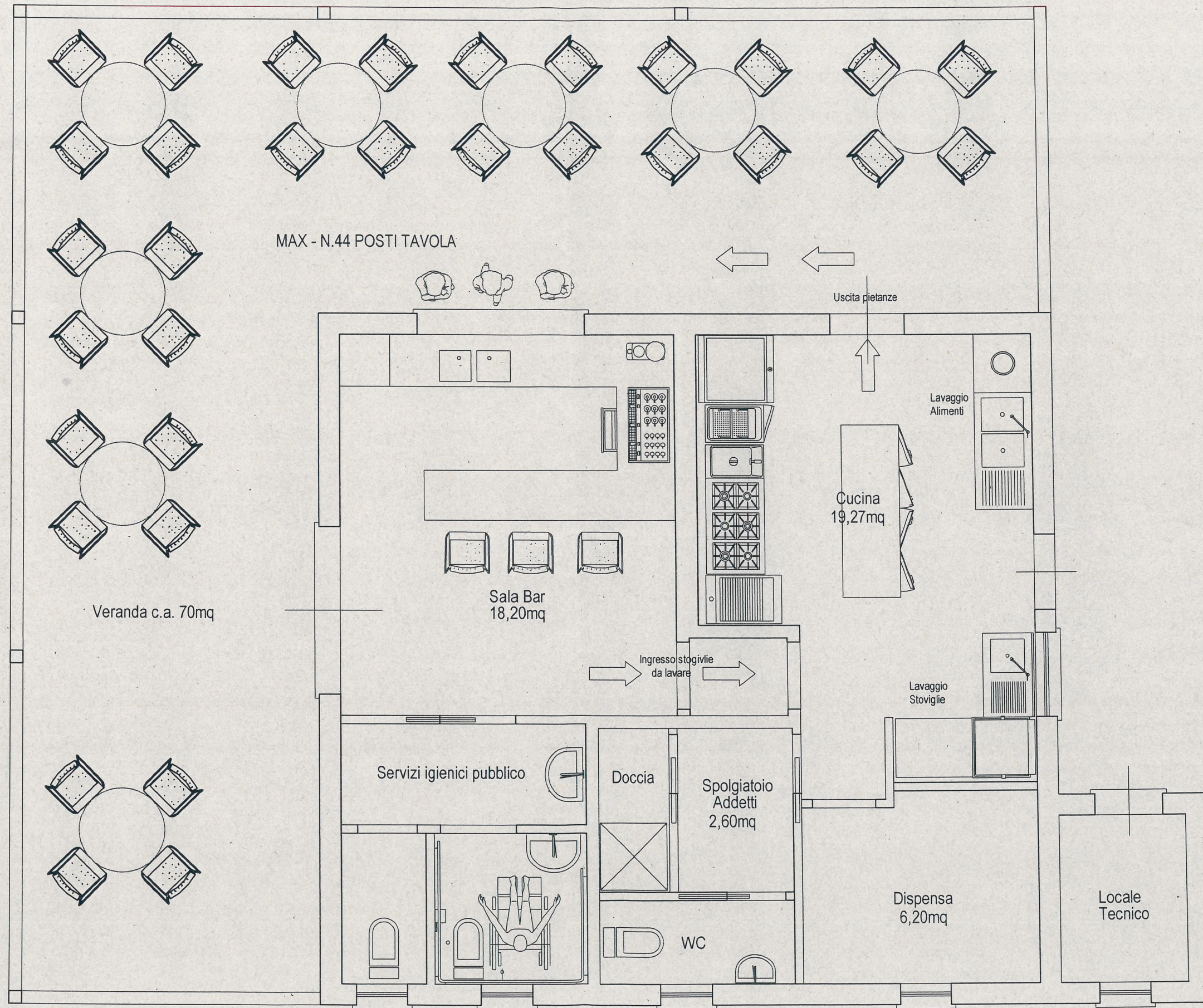
30 DIC. 2005



(PALAZZETTO 4)

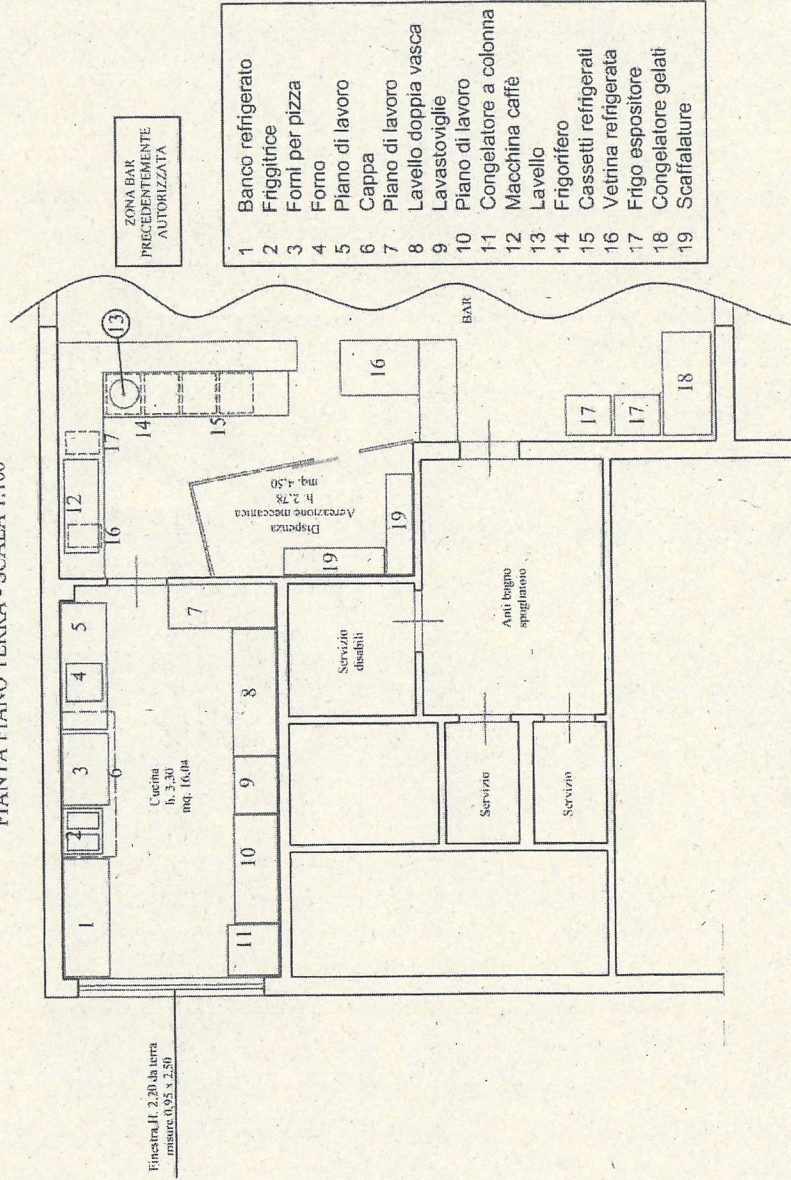


# Planimetria Ristorante-Bar (Scala 1:50)





PIANTA PIANO TERRA - SCALA 1:100



VERIFICA RAPPORTO AERO-ILLUMINANTE

ZONA	SUP. VANO	SUP. AI MIN.	SUP. ILLUM	SUP. APRIBILE
CUCINA	16.04 m <sup>2</sup>	2.005 m <sup>2</sup>	2.37 m <sup>2</sup>	2.37 m <sup>2</sup>
DISPENSA	15.41 m <sup>2</sup>	0.56 m <sup>2</sup>		RIC. ARIA 5 VOL/h

ASD HOCKEY CLUB  
FORTE DEI MARMI

Via ferrucci / presso Palasport  
55042 - Forte dei Marmi (LU)

LA COMMITTEZZA  
TIMBRO E FIRMA

**A.S.D. HOCKEY CLUB F.D.M.**  
Via Ferrucci 11  
55042 Forte dei Marmi (LU)  
PIVA 01585090465

Il tecnico  
Dott.ssa Lari Maria  
Ellemme Prevenzione  
Via di Montramito 120/C  
Viareggio (LU)

IL TECNICO  
TIMBRO E FIRMA